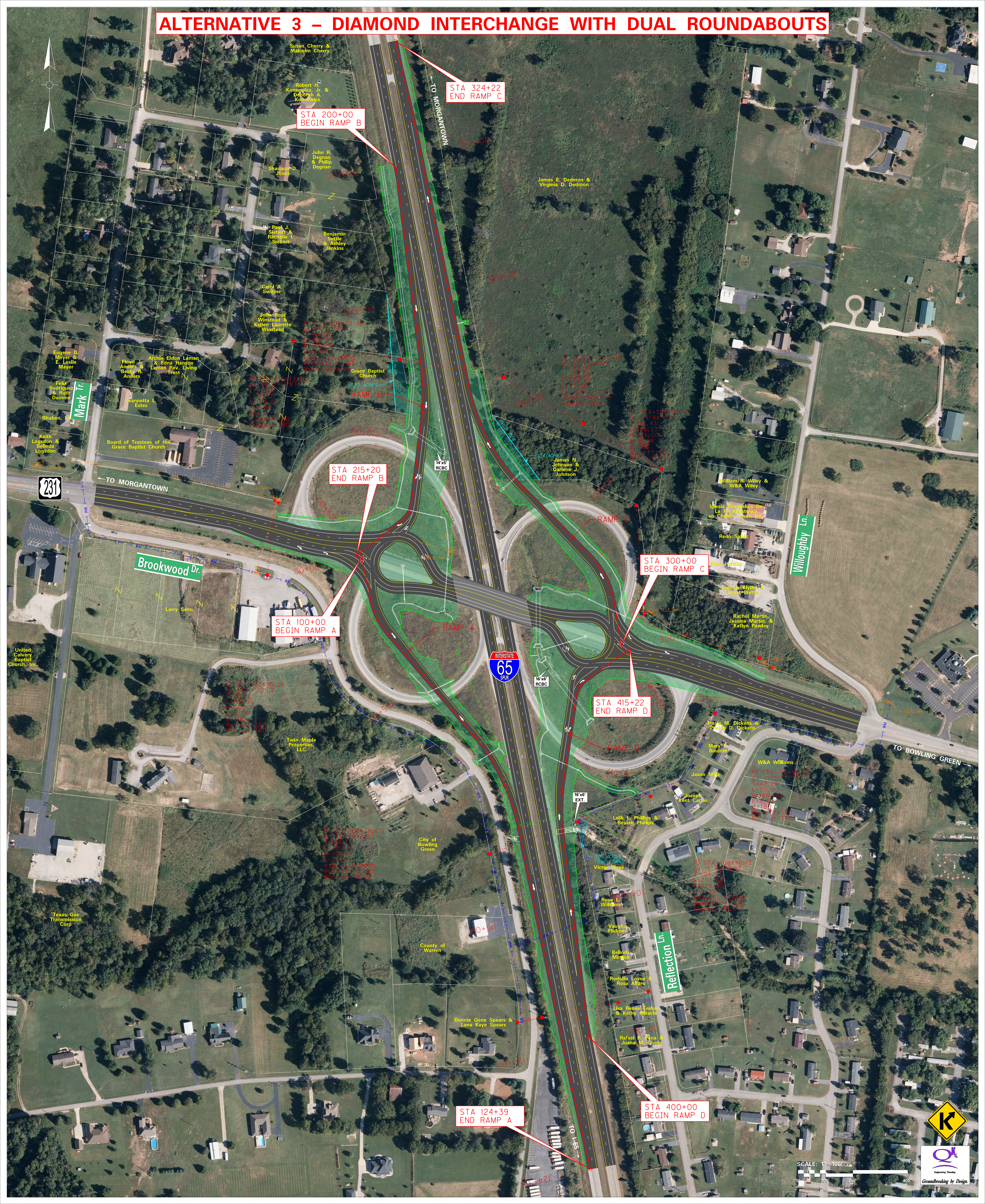


# ALTERNATIVE 3 - DIAMOND INTERCHANGE WITH DUAL ROUNDABOUTS



STA 200+00  
BEGIN RAMP B

STA 324+22  
END RAMP C

STA 215+20  
END RAMP B

STA 100+00  
BEGIN RAMP A

STA 300+00  
BEGIN RAMP C

STA 415+22  
END RAMP D

STA 124+39  
END RAMP A

STA 400+00  
BEGIN RAMP D

SCALE: 1" = 100'

